

The **Value** Line

GAMCO
Commercial Restroom Accessories

The Value Line



Gamco fulfills a specific niche in the commercial restroom accessories market when budget pricing is the primary consideration. Architects, distributors and developers have counted on Gamco for a comprehensive line of products designed and engineered for long-lasting durability and functionality. There is no better value.

Large Project Focus

ON TIME, ON BUDGET

Gamco's manufacturing capabilities are designed for school, government, retail and other industrial projects. Customers can count on Gamco to meet their delivery requirements for even the largest projects.



InStock

3-DAY SHIPMENTS

Choose from an extensive assortment of the most popular accessory models, and benefit with 3-day shipments within the U. S. from date of order. InStock models can be found at gamcousa.com and are identified with the "IS" symbol throughout this catalog.

Gamco Customer Service

POWERED BY BOBRICK AND IBOB



Best-in-class Bobrick customer service is another reason the construction market relies on Gamco. Customers benefit with the iBob state-of-the-art order entry and tracking system that provides real time information throughout the production, manufacturing and fulfillment process.

Customization

AND SPECIAL FINISHES

Height, width and depth dimensions can be customized for non-standard installations and special short-run quantities can be accommodated in most cases.



Table of Contents

Catalog symbols

AND WHAT THEY MEAN



The wheelchair designates accessories that meet ADA Accessibility Guidelines. For a free copy of Bobrick's most up-to-date Planning Guide for Accessible Restrooms, visit bobrick.com.



Many of Gamco's products assist customers in fulfilling their sustainability and LEED objectives. For example, accessories are fabricated of 50%-70% recycled stainless steel. See Gamco's GTB-88 LEED information bulletin.



Products with the InStock symbol ship within three days of receipt of order.

Combination Towel & Waste Units	4
Towel Dispensers & Waste Receptacles	5
Hand Dryers	6
Restroom Accessories	6
Mirrors	7
Toilet Tissue Dispensers	8
Seat Cover Dispensers	8
Soap Dispensers.	9
Grab Bars.	10-11
Feminine Hygiene Accessories.	12
Custodial Accessories	12
Healthcare Accessories	13
Shower Accessories.	14
Security Accessories	15
Specialty Accessories	16-17

Product Index

100 Series.	10	813NRC	8	MSA-1	15
100CH.	14	814NRC	8	MSA-5	15
100CHNR	14	A-Series	7	MSA-14	15
100CHSS	14	BCS-1	6	MSA-18	15
100SC-42 x 72	14	BCS-2	6	MSA-25	15
100SC-72 x 72.	14	BP-1	13	ND-1.	12
125 Series.	10	CD-1	17	ND-5.	12
125 Swing-Up.	11	CG-2.	13	RGD-1	13
125 Swing-Up-PH.	11	C-Series	7	S-5.	6
150 Series.	10	DR-5120.	6	SPB-1	13
23	8	DR-5128.	6	SPH-2	12
282 25.	12	DR-5750.	6	SRC100C	14
352 25.	12	FT-Series	7	TB-2	16
355	16	G-16AP	9	TB-3	16
751 x 18.	16	G-58AP	9	TD-11RPT	5
751 x 24.	16	G-64LB	9	TD-2	5
753	17	G-211	17	TD-5.	5
7636.	16	G-397	13	TD-11RPT	5
7673 x 18	14	G-950FA.	9	TTD-5	8
7673 x 24	14	G-950SA	9	TTD-11	8
76737 x 18	14	G-2116.	17	TTD-13	8
76737 x 24	14	G-5181	14	TSC-1	8
7674 x 18	16	G-5191	14	TW-1.	4
7674 x 24	16	G-8258	9	TW-1F	4
76747 x 18	16	G-8248	9	TW-1FS	4
76747 x 24	16	GB-5 Series	11	TW-3.	4
7676 x 24	12	GB-10 Series	11	TW-14RP	4
76767 x 24	12	GB-12 Series	11	TW-14RPFS	4
76777	17	GB-45 Series	11	TW-14RP-T	4
76787	16	GB-50 Series	11	US-5.	12
7679.	16	MC-1	13	WR-6	5
7680.	14	MC-2.	13	WR-11	5
76807	14	MS-1.	12	WR-14	5
7682.	17	MS-18	7		
76827	17	MS-24	7		

Combination Towel & Waste Units

TW-1 RECESSED COMBINATION TOWEL DISPENSER AND WASTE RECEPTACLE



Satin-finish stainless steel, one-piece 22-gauge (0.88mm) flange and removable waste receptacle, 18-gauge (1.2mm) door. Receptacle projects 5" (127mm).

TOWEL CAPACITY: 600 C-fold or 800 multifold

WASTE CAPACITY: 12-gal. (45.4-L)

OVERALL SIZE: 17 1/8" W, 56" H (435 x 1422mm)

TW-1F Semi-recessed 2" (51mm) skirt

TW-1FS Surface-mounted 4" (102mm) skirt

TW-3 RECESSED COMBINATION MINI-TOWEL DISPENSER AND WASTE RECEPTACLE



Satin-finish stainless steel, one-piece 22-gauge (0.8mm) flange and removable waste receptacle.

TOWEL CAPACITY: 350 C-fold or 475 multifold

WASTE CAPACITY: 2-gal. (7.6-L)

OVERALL SIZE: 14" W, 28" H, 4" D (356 x 711 x 102mm)

TW-14RP RECESSED COMBINATION ROLL TOWEL DISPENSER AND WASTE RECEPTACLE



Satin-finish stainless steel, one-piece 22-gauge (0.8mm) flange and removable waste receptacle, 18-gauge (1.2mm) door. Receptacle projects 5" (127mm). Towels are dispensed when lower bar is pushed.

TOWEL CAPACITY: Roll 7 3/4" (197mm) wide up to 8" (203mm) dia.

WASTE CAPACITY: 12-gal. (45.4-L)

OVERALL SIZE: 17 1/8" W, 56" H (435 x 1422mm)

TW-14RPFS Surface-mounted 4" (102mm) skirt

TW-14RP-T COMBINATION AUTOMATIC ROLL TOWEL DISPENSER AND WASTE RECEPTACLE



Satin-finish stainless steel, one-piece 22-gauge (0.88mm) flange and removable waste receptacle, 18-gauge (1.2mm) door. Receptacle projects 5" (127mm).

TOWEL CAPACITY: Accepts paper rolls 7 3/4" (197mm) wide up to 8" (203mm) dia. 1 1/2" to 2" (38 to 51mm) core

WASTE CAPACITY: 12-gal. (45.4-L)

OVERALL SIZE: 17 1/8" W, 56" H (435 x 1472mm)

Towel Dispensers & Waste Receptacles

TD-2
SURFACE-
MOUNTED
TOWEL
DISPENSER



TD-5
SURFACE-
MOUNTED
SINGLE
FOLD
TOWEL
DISPENSER



TD-11RPT
SURFACE-
MOUNTED
AUTOMATIC
TOUCHLESS
ROLL PAPER
TOWEL
DISPENSER



Satin-finish stainless steel, 22-gauge (0.8mm). Cabinet slots on sides indicate paper towel supply.

TOWEL CAPACITY: 400 C-fold or 525 multifold

OVERALL SIZE: 10 13/16" W, 14 1/16" H, 3 15/16" D (275 x 355 x 100mm)



Satin-finish stainless steel, 22-gauge (0.8mm). Cabinet slots on sides indicate paper towel supply.

TOWEL CAPACITY: 400 singlefold

OVERALL SIZE: 11 1/2" W, 7 1/2" H, 6" D (292 x 191 x 152mm)

Satin-finish stainless steel. Towels are dispensed automatically when hands are placed below dispenser. Individually adjustable modes for paper saving, time delay and sheet length.

TOWEL CAPACITY: Universal roll paper, 7-3/4" to 8" (197 to 203mm) wide and up to 8" (203mm) in diameter. 1-1/2" to 2" (38 to 51mm) core.

OVERALL SIZE: 13" W, 16 7/8" H, 8 7/8" D (330 x 429 x 225mm)

WR-6
RECESSED
WASTE
RECEPTACLE



WR-11
FLOOR
STANDING
SWING-TOP
WASTE
RECEPTACLE



WR-14
SURFACE-
MOUNTED
WASTE
RECEPTACLE



Satin-finish stainless steel, one-piece 22-gauge (0.8mm) flange and removable waste receptacle. Receptacle projects 5" (127mm).

CAPACITY: 12-gal. (45.4-L)

OVERALL SIZE: 17 1/8" W, 30 5/8" H x 8 3/4" D (435 x 778 x 222mm)



Satin-finish stainless steel 20-gauge (0.89mm) receptacle. Self-closing doors. Rubber feet provided.

CAPACITY: 13-gal. (49.2-L)

OVERALL SIZE: 12 1/2" W, 29 1/2" H, 12 1/2" D (318 x 749 x 318mm)



Satin-finish stainless steel 22-gauge (0.8mm) receptacle. Hemmed top and bottom edges for safety.

CAPACITY: 12-gal. (45.4 L)

OVERALL SIZE: 15 1/4" W, 23" H, 8" D (387 x 584 x 203mm)

Hand Dryers

DR-5128

SURFACE-MOUNTED ADA COMPLIANT HAND DRYER



Brushed stainless steel cover with SteriTouch® antimicrobial additive. No-touch operation. cETLus approved.

UNIVERSAL VOLTAGE: 110-120/208/220-240 VAC input

OVERALL SIZE: 11 7/16" W, 10 11/16" H, 3 15/16" D (290 x 271 x 100mm)

DR-5120 White epoxy painted cover

SteriTouch is a registered trademark of SteriTouch Ltd.

DR-5750 115V

RECESSED CAST IRON HAND DRYER



1/4" thick cast iron with porcelain enamel finish. Universal motor type, 1/10 hp at 7500 rpm. cULus listed.

VOLTAGE: 115V AC, 9.6 Amp, 60 Hz

OVERALL SIZE: 13.1" W, 13.9" H, 7.5" D (333 x 353 x 189mm)

Restroom Accessories

BCS-1

SURFACE-MOUNTED BABY CHANGING STATION



Cream-color polypropylene cabinet and bed. Reinforced full-length steel-on-steel hinge mechanism.

OVERALL SIZE: Closed - 35 1/4" W, 20" H, 4" D (895 x 508 x 100mm)

Extension open - 19" (483mm)

BCS-2 Similar to BCS-1 in Grey

S-5 SERIES

STAINLESS STEEL SHELF



Satin-finish stainless steel, 18-gauge (1.2mm). Brackets - 18-gauge (1.2mm) welded to shelf.

OVERALL SIZE: 16" L, 5" W, 4" H (406 x 127 x 110mm)

A-SERIES WELDED-FRAME



Satin-finish stainless steel. Corners welded, ground and polished smooth.

STANDARD SIZES/MODEL NUMBERS: A-18 x 24, **IS** A-18 x 30, **IS** A-18 x 36, A-18 x 60, A-24 x 30, A-24 x 36, A-24 x 48, A-24 x 60, A-24 x 72, A-36 x 36, A-48 x 30, A-48 x 36, A-60 x 36, A-72 x 36

Max. one-piece mirror is 96" x 48" any direction, custom sizes available

OPTIONS:

- T** For tempered glass
 - L** For laminated glass
 - SS** For polished stainless steel;
- MS-18 & MS-24 Mirror Shelf available for A, C, FT-Series

C-SERIES CHANNEL-FRAME



Bright-polished stainless steel finish. Mitered corners

STANDARD SIZES/MODEL NUMBERS: C-18 x 24, **IS** C-18 x 30, **IS** C-18 x 36, C-20 x 60, C-24 x 30, **IS** C-24 x 36, C-24 x 48, C-24 x 60, C-30 x 36, C-36 x 36, C-36 x 48, C-48 x 36, C-60 x 36, C-72 x 36

Max. one-piece mirror is 96" x 48" any direction, custom sizes available

OPTIONS:

- T** For tempered glass
 - L** For laminated glass
 - SS** For polished stainless steel;
- MS-18 & MS-24 Mirror Shelf available for A, C, FT-Series

MS-18 MIRROR SHELF



Satin-finish stainless steel. Mirror shelf is 18" L, 1 1/4" H (457 x 32mm), ADA-compliant, protrudes 4" (100mm) from wall.

MS-24 **IS** 24" L, 1 1/4" H (610 x 32mm)

Special-order sizes: up to 60" (1525mm) are available on request.

FT-SERIES FIXED-TILT POSITION



Satin-finish stainless steel frame. Corners welded, ground and polished smooth.

STANDARD SIZES/MODEL NUMBERS: **IS** FT-18 x 30, **IS** FT-18 x 36, FT-24 x 36

OPTIONS:

- T** For tempered glass
 - L** For laminated glass
 - SS** For polished stainless steel;
- MS-18 & MS-24 Mirror Shelf available for A, C, FT-Series

— Toilet Tissue Dispensers & Seat Covers —

TTD-5

SURFACE-MOUNTED MULTI-ROLL TOILET TISSUE DISPENSER



Satin-finish stainless steel. Extra toilet tissue roll automatically drops in place after bottom roll is depleted.

CAPACITY: Two rolls up to 5 1/4" (135mm) dia.

OVERALL SIZE: 6 1/16" W, 11" H, 5 15/16" D (154 x 279 x 151mm)

TTD-11

SURFACE-MOUNTED JUMBO-ROLL TOILET TISSUE DISPENSER



Satin-finish stainless steel, 20-gauge (0.89mm). Sliding panel exposes one roll at a time and allows for easy roll changeover.

CAPACITY: Two rolls up to 9" (289mm)

OVERALL SIZE: 19 3/16" W, 10 3/8" H, 5 1/4" D (487 x 264 x 133mm)

TTD-13

SURFACE-MOUNTED JUMBO TOILET TISSUE DISPENSER



Satin-finish stainless steel. 22-gauge (0.8mm). Slot on front reveals tissue supply.

CAPACITY: One roll up to 9 3/8" (238mm) dia. 4" (102mm) wide

OVERALL SIZE: 10 1/2" W, 4 1/2" D (267 x 114mm)

23

TOILET TISSUE HOLDER



Bright-polished chrome-plated steel. Theft-resistant locking device.

CAPACITY: Two rolls up to 5" (127mm) dia.

OVERALL SIZE: 12 3/8" W, 12 3/4" H, 4 1/4" D (314 x 70 x 108mm)

814NRC

DOUBLE-ROLL TOILET TISSUE HOLDER WITH NO ROLL CONTROL



Die cast aluminum. Theft-resistant locking device. Spindle fabricated of grey polystyrene.

CAPACITY: Two rolls up to 5 1/4" (133mm) dia.

OVERALL SIZE: 13 1/8" W, 1 3/4" H, 4 1/4" D (333 x 44 x 108mm)

813NRC Surface-mounted single-roll toilet tissue holder with no roll control

TSC-1

SURFACE-MOUNTED TOILET SEAT-COVER DISPENSER



Satin-finish stainless steel, 22-gauge (0.8mm). Fills from the bottom through concealed opening.

CAPACITY: Dispenses 250 single- or half-fold covers

OVERALL SIZE: 15 3/4" W, 11" H, 2" D (400 x 279 x 51mm)

NEW G-8258

COUNTER-MOUNTED
AUTOMATIC,
TOP-FILL LIQUID
SOAP DISPENSER



Bright polished 304 stainless steel spout equipped with touchless IR sensor and low soap level LED light indicator. Locked fill port cap opens with a special funnel key that is used for top filling the dispenser. Polypropylene reservoir tank installs below counter.
CAPACITY: 50.7-fl. oz. (1.5-L)

NEW G-8248

COUNTER-MOUNTED
AUTOMATIC,
TOP-FILL
FOAM SOAP
DISPENSER



Bright polished 304 stainless steel spout equipped with touchless IR sensor and low soap level LED light indicator. Locked fill port cap opens with a special funnel key that is used for top filling the dispenser. Polypropylene reservoir tank installs below counter.
CAPACITY: 50.7-fl. oz. (1.5-L)

G-950SA SURFACE-MOUNTED AUTOMATIC LIQUID SOAP DISPENSER

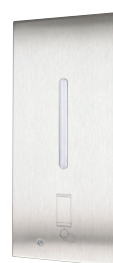


Satin-finish stainless steel. Dispenses a variety of liquid soaps and liquid or gel hand sanitizers. Lockable housing is equipped with clear acrylic refill-indicator window and hinged for refilling and maintenance. CE certified.

CAPACITY: 30-fl. oz. (850 ml)

OVERALL SIZE: 4 3/16" W, 10 17/32" H, 4 7/32" D (106 x 268 x 107mm)

G-950FA SURFACE-MOUNTED AUTOMATIC FOAM SOAP DISPENSER



Satin-finish stainless steel. Dispenses a variety of foaming soaps and foam hand sanitizers. Lockable housing is equipped with clear acrylic refill-indicator window and hinged for refilling and maintenance. CE certified.

CAPACITY: 27-fl. oz. (800 ml)

OVERALL SIZE: 4 1/4" W, 10 17/32" H, 4 7/32" D (108 x 268 x 107mm)

G-16AP SURFACE-MOUNTED LIQUID SOAP DISPENSER



Satin-finish stainless steel. Tank-type soap dispenser with all-purpose valve. Soap level indicator window. Hinged filler-top requires special key to open.

CAPACITY: 40-fl. oz. (1.2-L)

OVERALL SIZE: 4 3/4" W, 8 1/4" H, 3" D (120 x 210 x 76mm)

G-58AP SURFACE-MOUNTED HORIZONTAL LIQUID SOAP DISPENSER



Satin-finish stainless steel. Tank-type soap dispenser with all-purpose valve. Soap level indicator window. Hinged filler-top requires special key to open.

CAPACITY: 40-fl. oz. (1.2-L)

OVERALL SIZE: 8 1/4" W, 4 3/4" H, 3" D (210 x 121 x 76mm)

G-64LB COUNTER-MOUNTED LIQUID SOAP DISPENSER



Chrome-plated brass. 4" (102mm) spout. Polyethylene soap container with easy viewing of soap level. Top fill for convenience.

CAPACITY: 32-fl. oz. (0.9-L)

Grab Bars

EXPOSED FLANGE



- Stainless steel, 3" (76mm) dia. with 3 countersunk mounting holes.
- Available for 1 1/4" and 1 1/2" diameter bars.
- To specify: Series, E (Exposed) x grab bar length, e.g., 125E x 36

CONCEALED FLANGE



- 1/2" (13mm) deep, stainless steel, 3" (76mm) dia. furnished with 3 stainless steel set screws and one back plate.
- Available for 1 1/2" diameter bars.
- To specify: Series, C (Concealed) x grab bar length, e.g., 150C x 36

SNAP FLANGE



- Mounting plate is stainless steel, 3" (76mm) dia. Snap flange cover is stainless steel.
- Available for 1", 1 1/4" and 1 1/2" diameter bars.
- To specify: Series, S (Snap) x grab bar length, e.g., 150S x 36

100 SERIES STRAIGHT GRAB BAR



Satin-finish stainless steel tubing.

BAR DIA.: 1" (25mm)

STANDARD LENGTHS: 18", 24", (455, 610mm)

FLANGE STYLES: Snap

125 SERIES STRAIGHT GRAB BAR



Type 304 stainless steel tubing. Custom sizes available.

BAR DIA.: 1 1/4" (32mm)

STANDARD LENGTHS IN SATIN-FINISH: 12", 18", 24", 30", 36", 42", 48" (305, 455, 610, 760, 915, 1060, 1220mm).

STANDARD LENGTHS IN BRIGHT-POLISHED: 18", 24", 36", 42" (455, 610, 915, 1060mm)

SUFFLIX DESCRIPTION:

- B Bright-polished finish
- T Non-slip safety-texture grip
- E Exposed flange
- S **IS** Snap flange

150 SERIES STRAIGHT GRAB BAR



Satin-finish stainless steel tubing. Custom sizes available.

BAR DIA.: 1 1/2" (38mm)

STANDARD LENGTHS: 12", **IS** 18", **IS** 24", 30" **IS** 36", **IS** 42", 48" (305, 455, 610, 760, 915, 1060, 1220mm)

SUFFLIX DESCRIPTION:

- T Non-slip safety-texture grip
- C Concealed flange
- E Exposed flange
- S **IS** Snap flange

-5 SERIES

90 DEGREE ANGLE
LEFT or RIGHT



Standard dimensions: 16" W x 32" D (406 x 813mm), left or right configuration. Satin-finish stainless steel tubing. Custom sizes available.

BAR DIA.:

150 SERIES 1 1/2" (38mm)

MODEL NUMBERS: 150S-5L, 150S-5R

SUFFLIX DESCRIPTION:

-T Non-slip safety-texture grip

-10 SERIES

HORIZONTAL TUB GRAB BAR



Standard dimensions: 20" W x 40" D (508 x 1016mm). Satin-finish stainless steel tubing. Custom sizes available.

BAR DIA.:

125 SERIES 1 1/4" (32mm)

150 SERIES 1 1/2" (38mm)

MODEL NUMBERS: 125S-10, 150S-10

SUFFLIX DESCRIPTION:

-T Non-slip safety-texture grip

-12 SERIES

HORIZONTAL TUB OR SHOWER



Standard dimensions: 15 7/8" W, 30 7/8" D (403 x 784mm). Satin-finish stainless steel tubing. Custom sizes available.

BAR DIA.:

125 SERIES 1 1/4" (32mm)

150 SERIES 1 1/2" (38mm)

MODEL NUMBERS: 125S-12, 125S-12T, 150S-12, 150S-12T

SUFFLIX DESCRIPTION:

-T Non-slip safety-texture grip

-45 SERIES

HORIZONTAL SHOWER
GRAB BAR



Standard dimensions: 30" W x 30" D (762 x 762mm). Satin-finish stainless steel tubing. Custom sizes available.

BAR DIA.:

150 SERIES 1 1/2" (38mm)

SUFFLIX DESCRIPTION:

-T Non-slip safety-texture grip

-50 SERIES

TWO WAY
WHEELCHAIR BAR



Standard dimensions: 50" W x 36" D (1270 x 914mm). Satin-finish stainless steel tubing. Custom sizes available.

BAR DIA.:

125 SERIES 1 1/4" (32mm)

150 SERIES 1 1/2" (38mm)

MODEL NUMBERS: 125S-50, 150S-50

SUFFLIX DESCRIPTION:

-T Non-slip safety-texture grip

125

SWING-UP



Satin-finish stainless steel tubing.

OVERALL LENGTH: 29 15/16" D, 11 13/16" H (760 x 300mm)

BAR DIA.: 1 1/4" (32mm)

125

SWING-UP-PH



Satin-finish stainless steel tubing. With toilet tissue holder.

OVERALL LENGTH: 29 15/16" D, 11 13/16" H (760 x 300mm)

BAR DIA.: 1 1/4" (32mm)

Feminine Hygiene Accessories

282 25


SURFACE-MOUNTED NAPKIN-TAMPON VENDOR



Satin-finish stainless steel. Single-coin mechanism for 25¢ operation. 18-gauge (1.2mm) door. Separate lock and key for coin box.

CAPACITY: 30 Napkins, 27 Tampons

OVERALL SIZE: 11 7/8" W, 25 7/8" H, 6 1/2" D (300 x 655 x 165mm)

352 25 Recessed 13 7/8" W, 27 7/8" H, 4" to 6 1/2" D (350 x 710 x 100 to 165mm) 

ND-1

SURFACE-MOUNTED SANITARY NAPKIN DISPOSAL



Satin-finish stainless steel, 22-gauge (0.8mm).

CAPACITY: 1.0-gal. (3.8 L)

OVERALL SIZE: 7 1/2" W, 10" H, 3 13/16" D (191 x 254 x 97mm)

ND-5

SURFACE-MOUNTED COVERALL SANITARY NAPKIN DISPOSAL



Satin-finish stainless steel. Door has tumbler lock. Door has tumbler lock. Self-closing panel covers disposal opening. Removable, leak-proof, plastic receptacle.

CAPACITY: 1.2-gal. (4.6-L)

OVERALL SIZE: 10 11/16" W, 15 1/8" H, 4 1/16" D (270 x 385 x 105mm).

Custodial Accessories & Hooks

US-5

UTILITY SHELF



Satin-finish stainless steel, 18-gauge (1.2mm). Spring-loaded rubber cam holders. Shelf above handle area provides clear access to stored materials.

OVERALL SIZE: 34" L, 8" D (864 x 203mm), 3 Holders, 4 Hooks

MS-1

MOP STRIP



Mop holder with spring-loaded rubber cam holders. 24" (610mm) Mop Strip with 3 Holders

PROJECTS: 4 9/16" (116mm) from wall

7676 X 24

TOWEL BAR SHELF



Bright-polished stainless steel square tubes 3/8" (9.5mm) . 1/4" (6mm) square towel bar below shelf.

PROJECTS: 8 1/4" (210mm) from wall

76767 X 24 Similar to 7676 x 24 with satin-finish

SPH-2

SHELF WITH TOILET TISSUE DISPENSER



Satin-finish stainless steel. 1/2" (13mm) return edges for maximum rigidity.

CAPACITY: Two rolls up to 5 1/2" (140mm) dia.

OVERALL SIZE: 16" W, 4" H, 5" min. D (406 x 110 x 127mm)

SPB-1
SPECIMEN
PASS-THRU
CABINET



Satin-finish stainless steel. Self-closing doors provided with a pull knob. Removable tray provided.
OVERALL SIZE: 13 1/2" W, 12 7/8" H, 6" W (343 x 327 x 152mm)
Wall Thickness: 1 3/4" to 5 1/2" (10 to 140mm)

BP-1
SURFACE-
MOUNTED
BED PAN
RACK



Satin-finish stainless steel, 18-gauge (1.2mm).
OVERALL SIZE: 11" W, 24" H (279 x 610mm)
PROJECTS: 4 5/8" (117mm) from wall

MC-1
RECESSED
MEDICINE
CABINET



Recessed cabinet. Door has magnetic door catch and stainless steel door stop. Cabinet inverted for right- or left-hand door swing.
OVERALL SIZE: 16 3/8" W, 26 3/8" H, 4 5/16" D (416 x 660 x 109mm)
MC-2 Surface-mounted 4" (102mm) skirt

G-397
RECESSED
MEDICINE
CABINET



Recessed cabinet. Door has stainless steel channel frame and a magnetic catch. Cabinet inverted for right- or left-hand door swing.
OVERALL SIZE: 16 3/8" W, 26 3/8" H, 3 1/2" D (416 x 660 x 89mm)

CG-2
SERIES
CORNER
GUARD



Satin-finish stainless steel, 18-gauge (1.2mm). Units have 90° angle with 1/8" (3mm) radius. Custom sizes and styles available.
OVERALL SIZE: 1 1/2" W, 48" H, 1 1/2" D (29 x 1219 x 38mm)

RGD-1
RUBBER
GLOVE
DISPENSER



Satin-finish stainless steel, 22-gauge (0.8mm) flange.
CAPACITY: Any standard size box of rubber gloves
OVERALL SIZE: 14" W, 9 3/4" H, 4" D (356 x 248 x 102mm)

Shower Accessories

G-5181

FOLDING SOLID PHENOLIC
REVERSIBLE SHOWER SEAT



Seat is constructed of durable, water-resistant, ivory-colored 1/2" (13mm) thick solid phenolic. Reversible for left- or right-hand field installation.

OVERALL SIZE: Ht.: 17-19" (432-483mm) from top of seat to floor

SEAT: 33" W (840mm)

PROJECTS: 22 5/16" (565mm) from wall

G-5191

FOLDING SOLID PHENOLIC
SHOWER SEAT



Seat is constructed of durable, water-resistant, ivory-colored 5/16" (8mm) thick solid phenolic. Compact design.

OVERALL SIZE: Ht.: 17-19" (432-483mm) from top of seat to floor

SEAT: 18" W (455mm)

PROJECTS: 15 13/16" (400mm) from wall

100 SERIES

SHOWER CURTAINS



Opaque, matte white vinyl; Contains Sure-Check® Linen Antimicrobial Fabric Protection. Meets federal specifications.

100SC-42 x 72 Curtain 42" W, 72" H (1065 x 1830mm), requires 8 hooks

100SC-72 x 72 Curtain 72" W, 72" H (1830 x 1830mm), requires 13 hooks

Sure-Check is a Registered Trademark of PAR Technology Corporation.

SR100C

CONCEALED MOUNTING
SHOWER CURTAIN ROD



Curtain rod constructed of 18-gauge (1.2mm), satin-finish stainless steel. One-piece concealed flange constructed of 20-gauge (.90mm) stainless steel.

BAR DIA.: 1" (25mm), 1 1/4" (32mm)

STANDARD LENGTHS: 48", 60", 72" (914, 1067, 1219, 1524, 1829mm)

100 SERIES

SHOWER
CURTAIN
HOOKS



For use on 1" and 1 1/4" (25 and 32mm) dia. shower curtain rods.

OVERALL SIZES:

100CH Chrome-plated steel. Hook is 2 13/16" H x 1 15/32" W (71 x 37mm)

100CHNR Chrome-plated steel with nylon rollers 3 13/32" H, 1 7/8" W (87 x 48mm)

100CHSS Stainless Steel Hook is 2 5/8" H x 1 5/8" W (67 x 41mm)

7673

TOWEL BARS



Bright-polished 22-gauge (0.8mm) stainless steel square tubing.

PROJECTS: 3 1/4" (79mm) from wall

OVERALL SIZES:

7673 X 18 18" (457mm) bar length

7673 X 24 24" (610mm) bar length

76737 X 18 Satin finish, 18" (457mm) bar length

76737 X 24 Satin-finish, 24" (610mm) bar length

7680

SOAP DISH



Bright-polished stainless steel. Surface-mounted soap dish has two drain holes and two soap-support ridges.

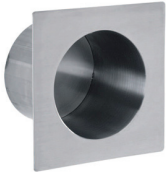
OVERALL SIZE: 4 1/4" (108mm) PROJECTS: 4 1/8" (105mm) from wall

OPTION:

76807 Satin-finish stainless steel

MSA-1

RECESSED
MAXIMUM
SECURITY
TOILET PAPER
HOLDER



Satin-finish stainless steel, 14-gauge (1.9mm).

CAPACITY: One standard toilet tissue roll

OVERALL SIZE: 7 1/16" W, 7 1/16" H, 4 3/8" D (179 x 179 x 111mm)

MSA-5

SURFACE-
MOUNTED
MAXIMUM
SECURITY SOAP
DISH - FRONT
MOUNTED



Type 304 11-gauge (3mm) stainless steel, with three 3/8" (10mm) diameter drainage holes.

OVERALL SIZE: 5" W, 2 5/16" H, 2 3/4" D (127 x 59 x 70mm)

MSA-18

MAXIMUM
SECURITY
CLOTHES
HOOK



Satin-finish stainless steel. Snaps down for safety when overloaded.

OVERALL SIZE: 1 1/2" W, 3 3/8" H (38 x 86mm)

PROJECTS: 1 3/8" (35mm) from wall

MSA-25 4 1/4" W, 4 1/4" H, 7/8" D (108 x 108 x 20mm); projects 1 1/4" (30mm) from back plate

MSA-25

MAXIMUM
SECURITY
CLOTHES
HOOK



Satin-finish stainless steel. Snaps down for safety when overloaded.

OVERALL SIZE: 4 1/4" W, 4 1/4" H, 7/8" D (108 x 108 x 20mm)

PROJECTS: 1 1/4" (30mm) from back plate

MSA-14

MAXIMUM SECURITY
GRAB BAR



12-gauge (2mm) satin-finish stainless steel. Closure plate welded to grab bar.

BAR DIA.: 1 1/2" (38mm)

FLANGE STYLES: Exposed

OVERALL SIZES:

MSA-14-18 18" (457mm) bar length

MSA-14-30 30" (762mm) bar length

MSA-14-36 36" (914mm) bar length

MSA-14-42 42" (1067mm) bar length

Note: Other lengths are available

1 1/2" (38mm) dia. exposed flange only.

Specialty Accessories

355

RECESSED FACIAL
TISSUE DISPENSER



Satin-finish stainless steel, 22-gauge (0.8mm).
CAPACITY: One box of 300 two-ply facial tissues

OVERALL SIZE: 11 7/8" W, 6 1/8" H, 3 15/16" D (300 x 155 x 100mm)

3552 CAPACITY: One box of 300 two-ply facial tissues

OVERALL SIZE: 11 7/8" W, 6 1/8" H, 2 1/14" D (300 x 155 x 55mm)

7679

SURFACE-
MOUNTED
TOOTHBRUSH AND
TUMBLER HOLDER



Surface-mounted toothbrush and tumbler holder shall be type-304 stainless steel with bright polished finish.

76797 Satin-finish stainless steel

OVERALL SIZE: 4 1/4" W, 2" H, 4 1/8" D (110 x 50 x 105mm)

PROJECTS: 4 1/8" (105mm) from wall

7636

SURFACE-
MOUNTED
RETRACTABLE
CLOTHES LINE



Type-304 stainless steel with bright polished finish. Equipped with locking device to keep cord from sagging when in use.

COVER SIZE: 3 5/8" W, 1 5/32" D (90 x 30mm)

BUTTON RETAINER PLATE SIZE: 1 1/4" W, 2 5/8" H (35 x 65mm)

76787

SURFACE-MOUNTED
TOWEL RING



Type-304 stainless steel with satin-finish. 22-gauge (0.8mm) Flange and support arm. Towel ring 1/4" (6mm) diameter bar, stainless steel bar.

PROJECTS: 2 3/8" (60mm) from wall

TB-2

HEAVY DUTY
TOWEL BAR



18" (457mm) Bar fabricated of 18-gauge (1.2mm) type 304 stainless tubing with satin-finish. Heavy satin chrome solid brass posts provided with mounting.

BAR DIA.: 1" (25mm)

OVERALL SIZES:

TB-3 24" (610mm) bar length

751

TOWEL BAR,
SQUARE, ZAMAK



Bright-polished finish. Posts are die cast from highest quality virgin zinc alloy (Zamak) to meet ASTM standard B-86.

PROJECTS: 3 1/4" (83mm) from wall

OVERALL SIZES:

751 X 18 18" (457mm) bar length

751 X 24 24" (610mm) bar length

76747

SURFACE-MOUNTED
TOWEL BAR



Type-304 stainless steel with satin-finish.

BAR DIA.: 3/4" (19mm)

OVERALL SIZES:

76747 X 18 18" (457mm) bar length

76747 X 24 24" (610mm) bar length

7674 X 18 Bright-polished, 18" (457mm) bar length

7674 X 24 Bright-polished 24" (610mm) bar length

753

DOUBLE ROBE HOOK



Die-cast from highest quality virgin zinc alloy (Zamak) to meet ASTM standard B-86.

OVERALL SIZE: 2 1/8" W, 1 1/2" H, 1 7/16" D (53 x 38 x 37mm)

7682

SURFACE-MOUNTED HAT AND COAT HOOK



Stainless steel with bright polished finish. Hook shall be 13 gauge (2mm), welded to the support arm.

76827 Satin-finish stainless steel

76777

SURFACE-MOUNTED TOWEL PIN



Type-304 stainless steel with satin-finish. 20-gauge (0.9mm) stainless steel wall plate.

OVERALL SIZE: 2" W, 2" H, 4 7/16" D (51 x 51 x 113mm)

G-2116

HEAVY-DUTY CLOTHES HOOK WITH CONCEALED MOUNTING



Locks to wall plate with three stainless steel set screws for theft-resistant mounting. Hook and flange are one-piece brass casting with satin nickel-plated finish to match stainless steel.

CAPACITY: Withstands 300 lbs. (136 kg) downward pull when properly installed.

OVERALL SIZE: 2 3/4" W, 2 3/4" H, 3 7/16" D (70 x 70 x 85mm)

PROJECTS: 3 7/16" (85mm)

CD-1

SURFACE-MOUNTED PAPER CUP DISPENSER



Type-304, 22-gauge (0.8mm) satin-finish stainless steel. Equipped with an adjustable bracket to hold cups, a refill-indicator slot, and a tumbler lock. Unit is adjustable to dispense 3- to 6-oz (0.1- to 0.2-L) paper or plastic flat-bottom cups.

OVERALL SIZE: 3 1/4" W, 14 1/2" H, 3 1/4" D (85 x 370 x 85mm)

G-211

RECESSED SOAP DISH



Stainless steel recessed shells are stamped from 22-gauge (0.8mm) corrosion-resistant type 304 stainless steel. Permanent soap holder is of type 304 polished stainless steel.

OVERALL SIZE: 6 1/4" W, 6 1/4" H, 1 7/8" D (85 x 370 x 85mm)

Gamcousa.com

Gamco Office	580.924.8066	bobrickcustomerservice@bobrick.com
Los Angeles	818.982.9600	bobrickcustomerservice@bobrick.com
New York	518.877.7444	bobrickcustomerservice@bobrick.com
International	+1.818.764.1000	international@bobrick.com